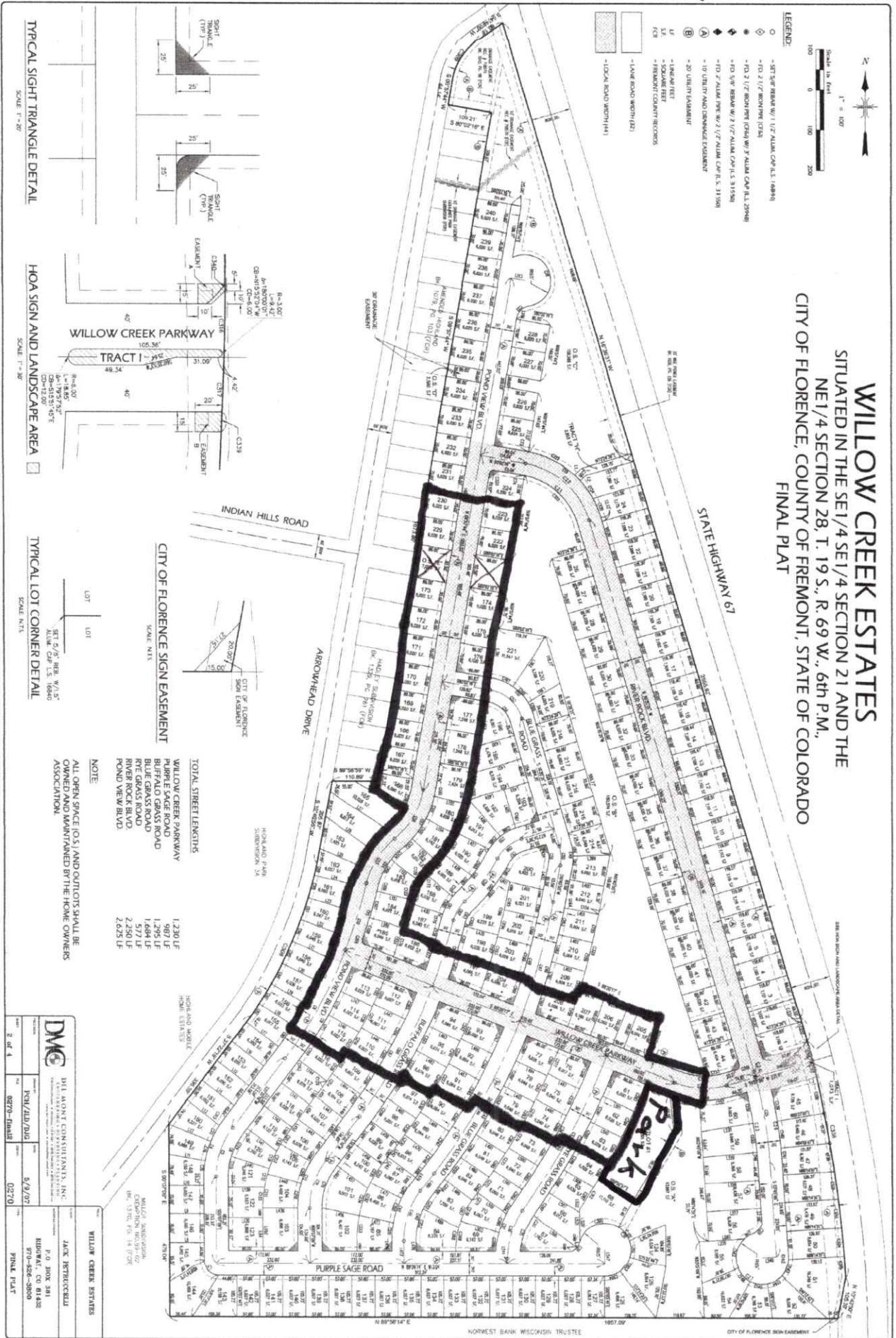


52 Lot Phase 2 + Park

REGISTERED: A4339, 1/10/4/2007, 46-011375 NM, 2 OF 4, 3 6/11, 09 R 1441.00
 NORMAL SURVEYED, FREMONT COUNTY, CO CLERK JEFF SANDERSON

WILLOW CREEK ESTATES SITUATED IN THE SE1/4 SE1/4 SECTION 21 AND THE NE1/4 SECTION 28, T. 19 S., R. 69 W., 6th P.M., CITY OF FLORENCE, COUNTY OF FREMONT, STATE OF COLORADO FINAL PLAT



TYPICAL SIGHT TRIANGLE DETAIL
 SCALE 1" = 20'

HOA SIGN AND LANDSCAPE AREA
 SCALE 1" = 20'

TYPICAL LOT CORNER DETAIL
 SCALE N.T.S.

NOTE:
 ALL OPEN SPACE (O.S.) AND OUTLOTS SHALL BE
 MAINTAINED AND MANAGED BY THE HOME OWNERS
 ASSOCIATION.

WILLOW CREEK ESTATES
 JAMES HESTER/CLELLI
 P.O. BOX 341
 HIGHLAND, CO 81426
 970-482-8000

TOTAL STREET LENGTHS

WILLOW CREEK PARKWAY	1,230 LF
PURPLE SAGE ROAD	1,587 LF
BLUE GRASS ROAD	1,688 LF
RIVER ROCK ROAD	577 LF
POND VIEW BLVD	2,250 LF

CITY OF FLORENCE SIGN EASEMENT

LOT	LOT
BT 6' 6" RB, V/L 5'	BT 6' 6" RB, V/L 5'
ALINE, C/P L.S. 16480	ALINE, C/P L.S. 16480

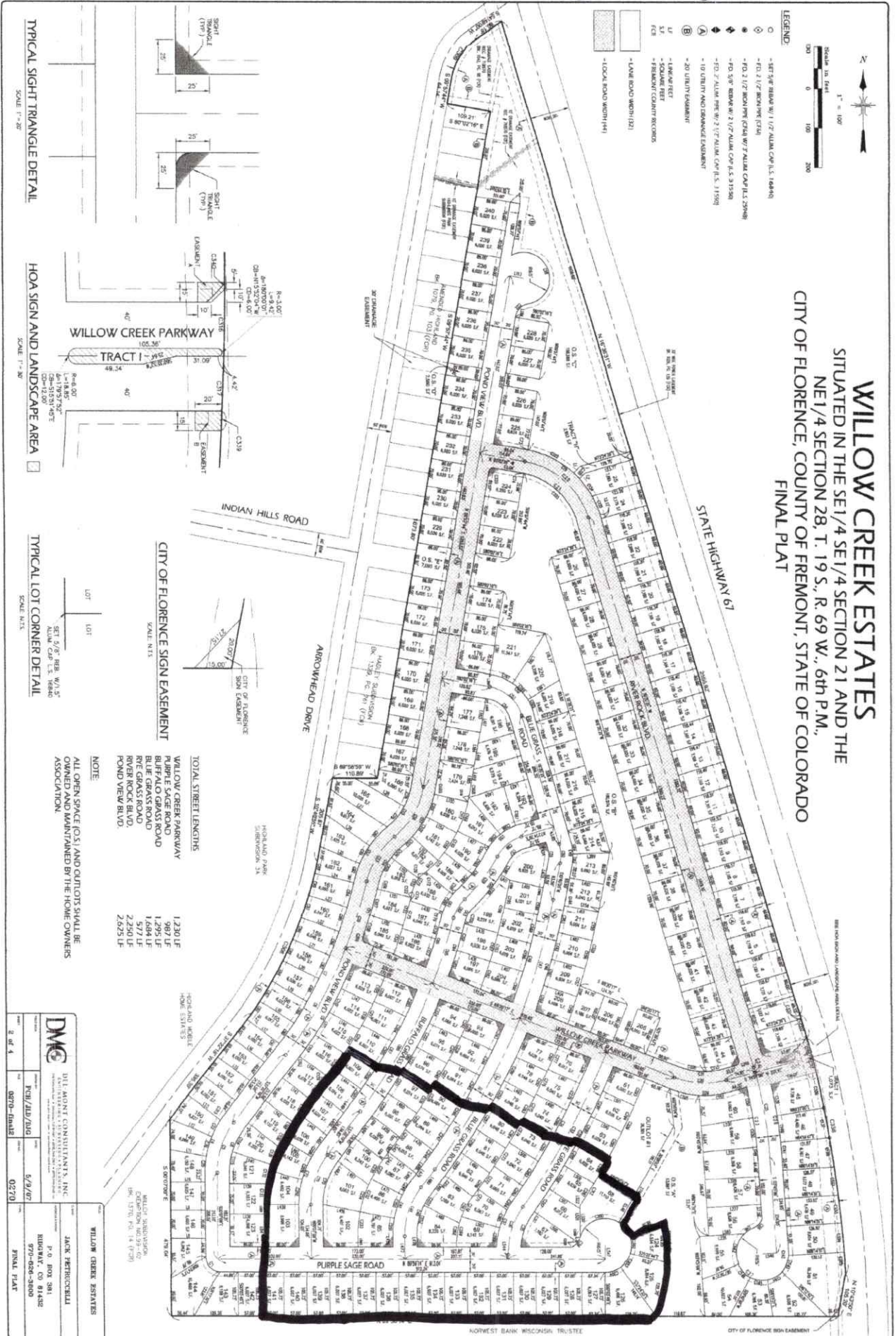
DME
 DAN ADONIS CONSULTANTS, INC.
 1000 W. 10TH AVENUE, SUITE 100
 DENVER, CO 80202
 303-733-7310
 5/9/97

FINAL PLAT
 02710

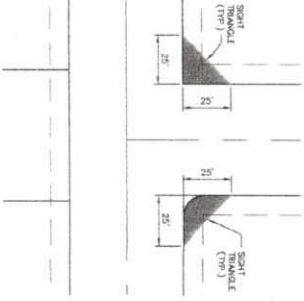
52 Lot Phase 3

REGISTERED PLAT NO. 141/1007, R. 61.13 S. 28. N. 67. E. 4, S. 1/4, S. 20, R. 64.1, 0.0
 HONDA MATTHEW, FLORENCE COUNTY, CO. CLEAR AND RECORDING

WILLOW CREEK ESTATES SITUATED IN THE SE 1/4 SE 1/4 SECTION 21 AND THE NE 1/4 SECTION 28, T. 19 S., R. 69 W., 6th P.M., CITY OF FLORENCE, COUNTY OF FREMONT, STATE OF COLORADO FINAL PLAT



TYPICAL SIGHT TRIANGLE DETAIL
 SCALE 1" = 20'



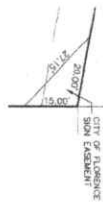
HOA SIGN AND LANDSCAPE AREA
 SCALE 1" = 20'



TYPICAL LOT CORNER DETAIL
 SCALE 1/8" = 1'



CITY OF FLORENCE SIGN EASEMENT
 SCALE 1/8" = 1'



TOTAL STREET LENGTHS

WILLOW CREEK PARKWAY	1,230 LF
PURPLE SAGE ROAD	1,981 LF
BLUE GRASS ROAD	1,298 LF
RIVER ROCK ROAD	1,577 LF
POND VIEW BLVD.	2,250 LF
ARROWHEAD DRIVE	2,625 LF

NOTE:
 ALL OPEN SPACE (OS) AND OUTLOTS SHALL BE OWNED AND MAINTAINED BY THE HOME OWNERS ASSOCIATION.

DME DISTRICT CONSULTANTS, INC.
 1000 N. 10TH ST., SUITE 100
 DENVER, CO 80202
 TEL: 303.733.1111
 FAX: 303.733.1112
 5/9/07

JACK HERRICKS
 P.O. BOX 381
 BIRDVALE, CO 81008
 970-628-3600
 FINAL PLAT

2 of 4
 0270-11440
 0270

